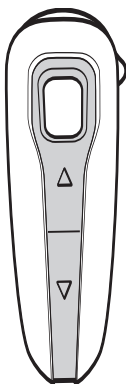




**PLANTRONICS**  
SOUND INNOVATION™



## User Guide

# DISCOVERY

Bluetooth® Headset with Digitally Enhanced Sound for Clear Conversations

DISCOVERY

**655**

**665**

by: plantronics | DESIGN

# TABLE OF CONTENTS

---

Package Contents & Features	3
Charging	4
Pairing	6
Powering	7
Adjusting Fit	8
Using Your Headset	9
Indicator Lights	11
Optional Accessories	12
Troubleshooting	13
Product Specifications	13
Technical Assistance	14
Warranty	14
Regulatory Notices	15

## WELCOME


Thank you for purchasing a Plantronics headset.

Let us provide you with the best possible service and technical support. After you review this user guide, if you need additional assistance or have any product questions, please contact:

- Plantronics Technical Assistance Center at 866-363-BLUE (2583)
- [www.plantronics.com/support](http://www.plantronics.com/support)

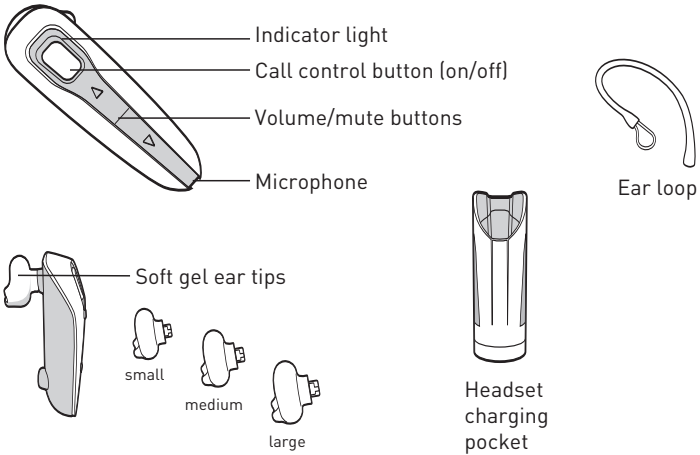
## REGISTER YOUR PRODUCT ONLINE

Visit [www.plantronics.com/productregistration](http://www.plantronics.com/productregistration) to register your product online so we can provide you with the best possible service and technical support.

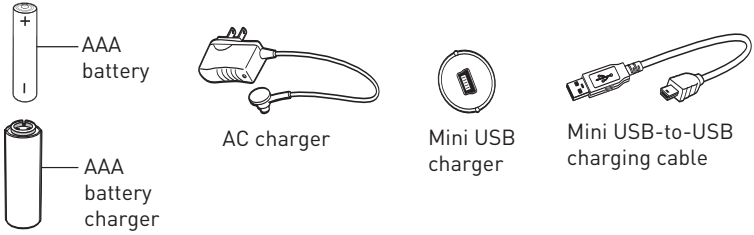


# PACKAGE CONTENTS & FEATURES

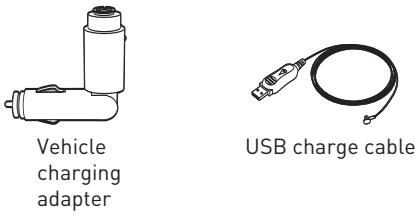
## PLANTRONICS DISCOVERY™ 655 AND 665



## DISCOVERY 655 ACCESSORIES




## DISCOVERY 665 ACCESSORIES



# CHARGING

## PLANTRONICS DISCOVERY 655

Before using, you must first charge your headset.

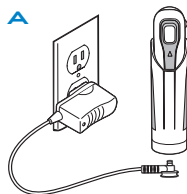
1 hour = minimum charge 

3 hours = full charge 

### Option A: Using the included AC charger

The indicator light flashes red while charging and turns off when fully charged.

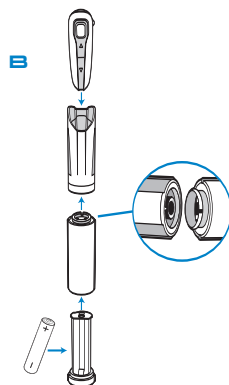
1. Plug the AC charger into the base of the charging pocket and connect it to your power source.
2. Insert the headset into the charging pocket.



### Option B: Using a AAA battery

One AAA battery recharges the headset to full capacity up to three times.

1. Twist the bottom of the AAA battery charger counter-clockwise and release the battery holder.
2. Insert the battery into the AAA battery holder.
3. Slide the battery holder back into the battery charger and turn clockwise.
4. Snap battery charger to charging pocket. Ensure that the indentation on the battery charger connector aligns with the shirt clip on the charging pocket.
5. Insert the headset into the charging pocket.



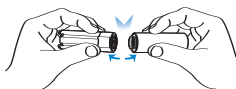
### CAUTION

Only replace with a non-rechargeable AAA battery.

## DISCONNECTING COMPONENTS

To separate components, grasp both the battery charger and the charging pocket with the shirt clip facing you. Bend the components back and they will snap apart.

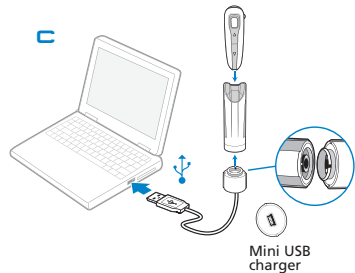
**NOTE** Do not twist the components apart.



# CHARGING

## Option C: Using the Mini USB-to-USB charging cable

1. Snap the mini USB charger to the charging pocket.
2. Use the mini USB-to-USB charging cable to connect the headset to your computer or laptop.
3. Turn your computer or laptop on.



## PLANTRONICS DISCOVERY 665

Before using, you must first charge your headset.

1 hour = minimum charge 

3 hours = full charge 

### Option A: Using the vehicle charging adapter.

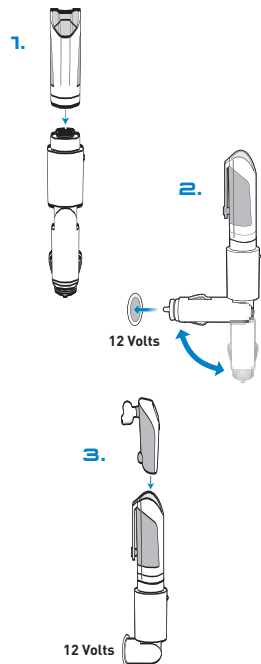
1. Snap the headset charging pocket onto the vehicle charging adapter as shown.
2. Plug the vehicle charging adapter into vehicle power socket and adjust the charging pocket angle so that the headset is within easy reach.

**CAUTION** Select a mounting option that does not interfere with car controls.

3. Dock the headset into the charging pocket as shown. If power is available to the vehicle power socket, the charging pocket will flash when the headset is docked.

**NOTE** The headset charges only when power is supplied to the vehicle power socket.

The green indicator on the vehicle charging adapter lights when power is supplied.

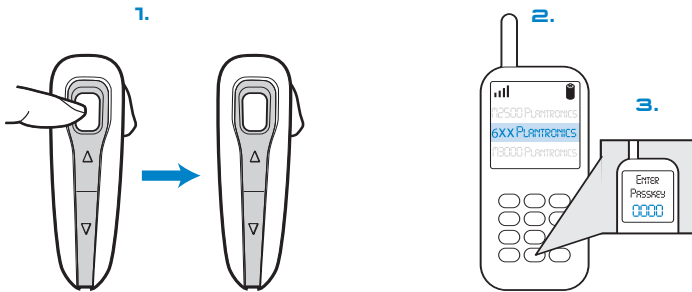


### Option B: Using USB charging cable

1. Use the USB charging cable to connect the headset charging pocket to your computer or laptop.
2. Turn your computer or laptop on.

# PAIRING

---



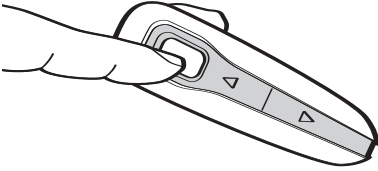
Before using your headset for the first time, you must pair it with your Bluetooth phone or device. Be sure the headset is fully charged. For set up and pairing instructions with Bluetooth devices other than mobile phones, please consult your Bluetooth device user guide.

Begin with headset turned off.

1. Press and hold down the call control button for 10 seconds until the headset status indicator begins to flash red then blue. The headset is now in pairing mode for the next 120 seconds.
2. While the headset is flashing, use the phone menu to search for Bluetooth devices and select "6xxPlantronics".
3. When prompted for a passkey, enter 0000. Headset will flash blue when paired successfully.

# POWERING

---



1. Turn on the headset by pressing and holding the call control button until the indicator light glows blue. If you are wearing the headset, you will hear a beep when the power turns on. The indicator light will flash blue every 5 seconds when the power is on.
2. Turn off the headset by pressing the call control button for 6-8 seconds until the indicator light glows red or until you hear the beep. The indicator light remains unlit when the power is off.

## CHARGE LEVEL INDICATION

When the headset is turned on, the indicator light will briefly show the headset charge level.

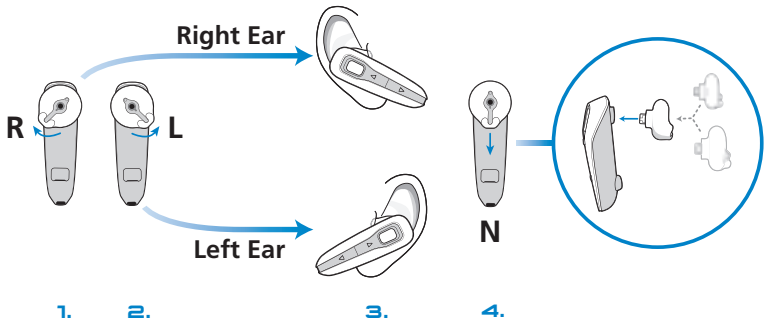
3 red flashes = greater than 2/3 battery charge

2 red flashes = 1/3 to 2/3 battery charge

1 red flash = less than 1/3 battery charge



# ADJUSTING FIT



The Plantronics Discovery 655 and Discovery 665 headsets come with three soft gel ear tips and an optional ear loop.

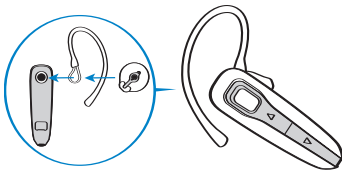
1. The medium-sized ear tip is pre-installed and aligned for wearing on the right ear (R).
2. For left ear wearing, twist the ear tip counter clockwise.
3. Place the headset into your ear and check to see that it fits comfortably. If the headset is either too tight or too loose, remove the medium-

sized ear tip from the headset by turning the ear tip to the center or neutral position.

4. In the neutral position, the ear tip can easily be removed by pulling the ear tip directly away from the headset.

Next, select the ear tip size that fits most comfortably in your ear. Hold the ear tip with the elongated edge pointing down toward the neutral position and then push the ear tip onto the headset.

## USING THE OPTIONAL EAR LOOP



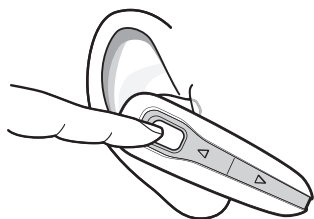
The ear loop may be attached to the headset to improve stability.

1. Remove the ear tip from the headset by turning the ear tip to the center or neutral position and pulling the ear tip away from the headset.
2. Attach the ear loop between the ear tip and the headset.
3. Replace the ear tip.



# USING YOUR HEADSET

---



## ANSWERING/ ENDING/MAKING CALLS

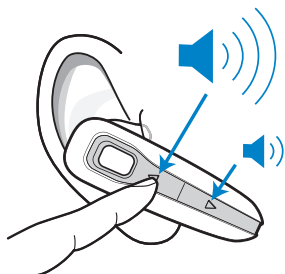
To answer or end a call, briefly press the call control button.

To make a call, enter number on your phone, press send, and the call is automatically transferred to the headset; no need to press the call control button.

**NOTE** When answering a call, wait until you hear a ring from the headset itself (not the ring from your phone), before pressing the call control button.

## AUTO ANSWER

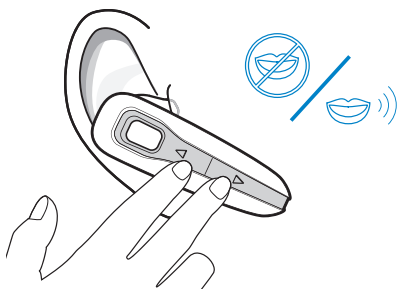
If the headset is placed in the carrying pocket when a call is received, the charging pocket will vibrate (Discovery 655) or light up (Discovery 665) when connected to power. Removing the headset from the pocket will automatically answer the call. Returning the headset to the charging pocket will end the call.



## ADJUSTING VOLUME

To increase listening volume, press the upper end (+) of the volume/mute button. To decrease listening volume, press the lower end (-).

**CAUTION** For your comfort, health, and safety, do not exceed moderate listening levels.



## MUTE A CALL

To turn the mute on while on a call, press both sides of the volume/mute button simultaneously until you hear a beep.

To turn the mute off, press both buttons again.

# USING YOUR HEADSET

---

## ADDITIONAL FEATURES

### Redialing Last Number

To activate last number redial, double press the call control button. You will hear a high tone after each double key press.

### Power Saving Mode

Power saving mode temporarily disables the digital signal processing (DSP) feature of the Discovery 655 and 665 headsets to provide a longer talk-time. To enable power saving mode, press both the volume up and down keys at the same time before you make a call. To re-enable DSP, press both the volume up and down keys at the same time. Power saving mode cannot be turned on while engaged in a call.

**NOTE** After you turn off the headset, DSP will be re-enabled the next time you turn it on.

### Using Voice Dialing

With the headset on, press and hold the call control button for 2 seconds to activate voice dialing.

**NOTE** To use voice activated dialing, the voice dialing feature must be enabled on your phone. See your Bluetooth phone manual for instructions.

### Rejecting a Call

When receiving an incoming call, press and hold the call control button for 8 seconds to reject the call.

### Switching a Call from Phone to Headset

To switch an active call from your phone to your headset, briefly press the call control button for 2 seconds.

### Switching a Call from Headset to Phone

To switch an active call from your headset to your phone, press and hold the call control button for 2 seconds.

## MOVING OUT OF RANGE

As the headset moves more than 33 feet (10 meters) away from the Bluetooth device or encounters interference:

- Audio quality will degrade
- A beep will be heard in the headset when the connection drops between headset and Bluetooth device
- When out of range, only the power off function will operate

If any of the above occur, move closer to your Bluetooth device.

# INDICATOR LIGHTS

---

<b>Headset Status</b>	<b>Headset Indicator Light</b>
Powering on	Blue light appears and flashes every 6 seconds
Power on	Blue light flashes every 5 seconds.
Powering off	Red light appears and goes off.
Power off	—
Charging battery	Red light flashes every 5 seconds.
Battery fully charged	Red light goes off.
Low battery	Red light flashes every second.
Pairing mode	Red then blue light flashes for 120 seconds
Missed call	Purple light flashes every 5 seconds. Press any button to cancel.
Ringing	Purple light flashes rapidly.
Headset in pocket (Discovery 655)	Headset vibrates to indicate incoming call.
Headset in pocket and connected to power source (Discovery 665)*	Headset and charging pocket light up to indicate incoming call.
On Line Indicator (OLI)	Blue light flashes every 10 seconds.

\*If no power source is connected, charging pocket will not light up.

# OPTIONAL ACCESSORIES

---

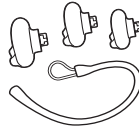
## AVAILABLE FOR PURCHASE



**73646-01**  
Vehicle Charging  
Adapter



**69519-01 USB**  
Headset Charger



**73647-01**  
Soft Gel Ear Tips  
and Ear Loop



**73649-01**  
AAA Battery  
Charger



MOTOROLA



PALM



NOKIA



SONY

**73650-01**  
4-pack Charge  
Adapter Kit



**73651-01**  
Mini USB  
Charger

To order, please contact your Plantronics supplier or go to [www.plantronics.com](http://www.plantronics.com).

# TROUBLESHOOTING

---

## PROBLEM

## SOLUTION

My headset does not work with my phone.

Headset was not in pairing mode when mobile phone menu selections were made. See page 6 "Pairing".

Incorrect menu selections were made on your mobile phone. See page 6 "Pairing".

I did not enter my passkey.

Your phone did not locate the headset. Repeat the pairing process on page 6.

Incorrect menu selections were made on your mobile phone. Repeat the pairing process on page 6.

Callers cannot hear me.

Mute is turned on. Press both sides of the volume/mute button simultaneously.

I cannot hear caller/dialing tone.

The headset is not turned on. Press the call control button for approximately 10 seconds until you hear a beep or see the indicator light glow blue to turn headset on.

Your headset is out of range. Move the headset closer to the phone or Bluetooth device.

Your headset battery is drained. Charge your battery using the AC charger, AAA battery, mini USB charger, or vehicle charging adapter above. See page 4 "Charging".

The listening volume is too low. Press the volume/mute button to increase the sound heard in the headset.

# PRODUCT SPECIFICATIONS

---

Talk time*	Up to 3.5 hours
Standby time*	Approximately 80 hours
Charge time	3 hours
Range	Bluetooth standard 33 feet (10 meters)
Power requirements	5V DC – 300 mA
Battery type	Lithium Ion
Version	Bluetooth 2.0

Supports Bluetooth Hands-Free and Headset Profiles.

\*Performance may vary by device.

# TECHNICAL ASSISTANCE

---

Visit our Web site at [www.plantronics.com/support](http://www.plantronics.com/support) for technical support including frequently asked questions, compatibility and accessibility information. The Plantronics Technical Assistance Center (TAC) is also ready to assist you on 866-363-BLUE (2583).

## WARRANTY

---

### LIMITED WARRANTY

- This warranty covers defects in materials and workmanship of products manufactured, sold or certified by Plantronics which were purchased and used in the United States.
- The warranty lasts for one year from the date of purchase of the products.
- This warranty extends to you only if you are the end user with the original purchase receipt.
- We will at our option, repair or replace the products that do not conform to the warranty. We may use functionally equivalent reconditioned/refurbished/remanufactured/pre-owned or new products or parts.
- To obtain service in the U.S., contact Plantronics at (866) 363-BLUE (2583).
- THIS IS PLANTRONICS' COMPLETE WARRANTY FOR THE PRODUCTS.
- This warranty gives you specific legal rights, and you may also have other rights that vary from state to state. Please contact your dealer or our service center for the full details of our limited warranty, including items not covered by this limited warranty.

# REGULATORY NOTICES

---

## **FCC REQUIREMENTS PART 15**

This device complies with Part 15 of the FCC Rules. Operation is subject to the following two conditions:

1. This device may not cause harmful interference, and
2. This device must accept any interference received, including interference that may cause undesired operation.

This equipment has been tested and found to comply with the limits for a Class B digital device, pursuant to Part 15 of the FCC Rules. These limits are designed to provide reasonable protection against harmful interference in a residential installation. This equipment generates, uses, and can radiate radio frequency energy and, if not installed and used in accordance with the instructions, may cause harmful interference to radio communications.

However, there is no guarantee that interference will not occur in a particular installation. If this equipment does cause harmful interference to radio or television reception which can be determined by turning the radio or television off and on, the user is encouraged to try to correct interference by one or more of the following measures:

1. Reorient or relocate the receiving antenna.
2. Increase the separation between the equipment and receiver.
3. Connect the equipment into an outlet on another circuit.
4. Consult the dealer or an experienced radio/TV technician for help.

## **EXPOSURE TO RADIO FREQUENCY RADIATION**

This device and its antenna must not be co-located or operated in conjunction with any other antenna or transmitter. To comply with FCC RF exposure requirements, only use supplied antenna. Any unauthorized modification to the antenna or device could void the user's authority to operate this device.



**PLANTRONICS**  
SOUND INNOVATION™

Plantronics, Inc.  
345 Encinal Street  
Santa Cruz, CA 95060 USA  
Tel: (800) 544-4660

[www.plantronics.com](http://www.plantronics.com)

© 2006 Plantronics, Inc. All rights reserved. Plantronics, the logo design, Plantronics Discovery and Sound Innovation are trademarks or registered trademarks of Plantronics, Inc. The Bluetooth® word mark and logos are owned by the Bluetooth SIG, Inc. and any use of such marks by Plantronics, Inc. is under license. All other trademarks are the property of their respective owners.

Patents U.S. 5,210,791; EM 392600-0001 and 392600-002; Patents Pending.

Printed in U.S.A.