



Plantronics Explorer® 360

User Guide

Welcome

Congratulations on purchasing a Plantronics headset. This User Guide contains instructions for setting up and using your Plantronics Explorer® 360 headset. Please refer to the separate Safety Instructions booklet for important product safety information prior to installation or use of the product.

Getting Assistance

The Plantronics Technical Assistance Center is ready to assist you. You can find answers to frequently asked questions, ask a question using e-mail, receive service over the Internet, or speak directly with a representative. Visit www.plantronics.com/support

Registering Your Product

Visit www.plantronics.com/product registration to register your product online so we can provide you with the best service and technical support.

Contents

Welcome	ii
What is Bluetooth®?	iv
Package Contents, Features and Accessories	1
Charging Your Headset	2
How to Charge Your Headset Using the AC Charger	2
Pairing Your Headset	4
Plantronics QuickPair™ Technology	4
How to Pair Your Phone With Your Headset for the First Time	5
How to Pair Your Headset if it Has Been Previously Paired With Another Device	6
Adjusting the Fit	7
Headset Controls	8
Range	9
Indicator Lights	10
Hands-Free Features	11
Troubleshooting	12
Product Specifications	13
Limited Warranty	14
Regulatory Notices	15

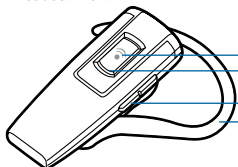
What is Bluetooth®?

Bluetooth wireless technology provides a way for devices to communicate with each other using short-range radio frequency instead of wires. Any two Bluetooth devices can communicate as long as they both have Bluetooth turned on, they are within range and they have been paired — a quick “handshake” process that connects the two devices. Bluetooth range is up to 33 feet (10 meters). Obstructions such as walls or other electronics devices can cause interference or shorten the effective range.

NOTE For optimal performance, place your headset and phone on the same side of your body.

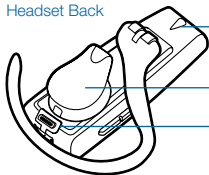
Package Contents and Features

Headset Front

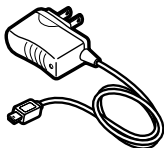


- Indicator Light
- Call Control Button (on/off)
- Volume Control
- Swivel Earloop

Headset Back



- Microphone
- Eartip
- Charging Jack



AC Charger
100-240V

Plantronics Explorer® 360 Accessories*



Vehicle Charging Adapter
#76777-01



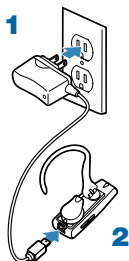
USB Headset Charger
#76016-01



Vehicle Power Charger
#78583-01

* Not included. To order, please contact your Plantronics supplier or go to www.plantronics.com

Charging Your Headset



How to Charge Your Headset Using Only the AC Charger

Before using your headset for the first time, charge it for at least one hour. A full charge takes approximately two hours.

- 1** Connect the AC charger to a power outlet.
- 2** Plug the AC jack into the charging jack on the headset.

While your headset is charging, the indicator glows red. When your headset is fully charged, the indicator turns off.

⚠ WARNING Do not use your headset while it is connected to the charger.

CHARGING TIME

2 hours
Full charge



1 hour
Minimum charge
before first use



Pairing Your Headset

Pairing is the process of introducing your headset to your phone. Before using your headset for the first time, you must pair it with your Bluetooth phone. Normally, you need to pair your headset with your phone only once.

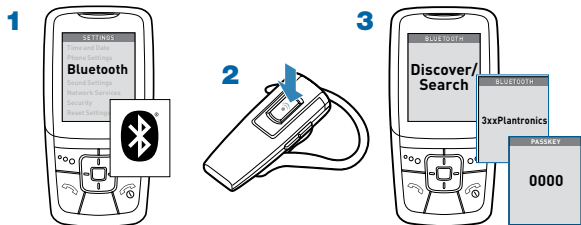
To see a demo of the pairing process, visit www.plantronics.com/EasyToPair

Plantronics QuickPair™ Technology

Your new headset includes Plantronics QuickPair technology to simplify the Bluetooth setup process. The first time you turn your headset on, your headset automatically enters pairing mode for 10 minutes. Once paired successfully, your headset stays on for instant use.

If not successfully paired after 10 minutes, your headset automatically powers off. When you turn the headset on again, it automatically goes into pairing mode until successfully paired with a Bluetooth phone.

Pairing Your Headset



How to Pair Your Phone With Your Headset for the First Time

1 Turn on the Bluetooth feature on your phone.

For most phones, select Settings/Tools > Connections > Bluetooth > On. See your phone's user guide for more information.

2 Turn the headset on.

Press and hold the call control button until the indicator flashes red/blue. The headset is now in pairing mode.

If you don't see the red/blue flash, press and hold the call control button to turn your headset off, and then press and hold the call control button again until you see the red/blue flash.

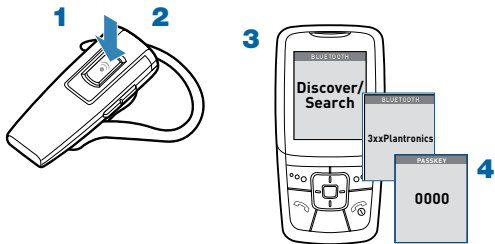
3 Use the commands on your phone to locate your headset.

For most phones, select Settings/Tools > Connections > Bluetooth > Search > 3XXPlantronics. See your phone's user guide for more information.

When prompted for the passkey, enter 0000.

Pairing is successful when the indicator on your headset flashes blue. Your headset is now connected and ready to use.

Pairing Your Headset



How to Pair Your Headset if it Has Been Previously Paired With Another Device

- 1 Turn the headset off.**

Press and hold the call control button until the indicator turns red and then turns off.
- 2 Turn the headset on.**

Press and hold the call control button until the indicator flashes red/blue. The headset is now in pairing mode.
- 3 Use the commands on your phone to locate your headset.**

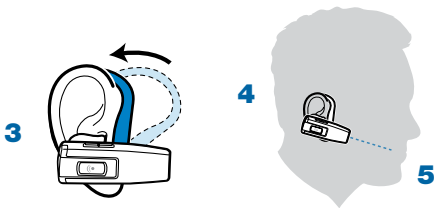
For most phones, select Settings/Tools > Connections > Bluetooth > Search > 3XXPlantronics. See your phone's user guide for more information.
- 4 When prompted for the passkey, enter 0000.**

Pairing is successful when the indicator on your headset flashes blue. Your headset is now connected and ready to use.

Adjusting the Fit



- 1** Lift the ear loop.
- 2** Swivel the ear loop to the right to wear it on your left ear, or swivel it to the left to wear it on your right ear.
- 3** Place the ear loop behind your ear.
- 4** Rotate the headset so that the speaker rests comfortably in your ear.
- 5** Align the microphone with the corner of your mouth.
Callers can hear you best when you point the microphone towards the corner of your mouth.



Headset Controls

Turn on the headset Press and hold the call control button until the indicator glows blue. You will hear ascending tones. The indicator then flashes red up to three times to show the battery charge level.

Turn off the headset Press and hold the call control button until the indicator glows red. You will hear descending tones. When power is off, indicator stays off.

Answer a call Briefly press the call control button.
When you receive a call, your phone may ring before your headset rings. Wait until you hear the ring in your headset before you press the call control button to answer the call.

Reject a call Press the call control button for 2 seconds.

End a call or cancel an outgoing call Briefly press the call control button.

Make a call Enter number on your phone, press send, and the call is automatically transferred to headset; no need to press call control button.

Adjust the volume Briefly push up or down on the volume button for incremental volume steps. You will hear two tones (high tone followed by low tone) at the volume limit.

⚠WARNING: Do not use headphones/headsets at high volumes for an extended period of time. Doing so can cause hearing loss. Always listen at moderate levels. See www.plantronics.com/healthandsafety for more information on headsets and hearing.

Headset Controls

Transfer a call from headset to phone

Press and hold the call control button until you hear a long, low tone.

Transfer a call from phone to headset

Briefly press the call control button.

Range

To maintain a connection, keep your headset within 33 feet (10 meters) of the Bluetooth device. If there are obstacles between your headset and the device, you may experience interference. For optimal performance, place your headset and phone on the same side of your body.

Audio quality degrades as you move out of range. When you are far enough away to lose the connection, you hear a high tone in the headset. The headset attempts to reconnect after 30 seconds. If you move back in range, you can manually reconnect by pressing the call control button.

NOTE Audio quality is also dependent upon the device with which the headset is paired.

Indicator Lights

Headset Status	Headset Indicator Light
Powering on	Blue flashes. Repeat.
Powering off	Red appears and goes off.
Charging battery	Red solid light.
Low battery	Red flashes.
Pairing mode	Blue/red flashes.
Missed call	Purple flashes. Single press the call control button to cancel.
Ringing	Purple flashes. Briefly press call control button to answer the call. Press call control button for 2 seconds to reject the call.

Hands-Free Features

If your phone and your wireless service provider both support hands-free operation, you can use the following features:

Redial the last number To activate last number redial, double press the call control button. You will hear a high tone after each double-key press.

Using Voice Dialing With the headset on, press the call control button for 2 seconds to activate the voice dialing.

NOTE To use voice-activated dialing, the voice-dialing feature must be enabled on your phone. See your Bluetooth phone manual for instructions.

Reject a call When receiving an incoming call, press the call control button for 2 seconds to reject the call.

Troubleshooting

My headset does not work with my phone.

Headset was not in pairing mode when mobile phone menu selections were made. See page 5 “Pairing Your Headset.”

Incorrect menu selections were made on your mobile phone. See page 5 “Pairing Your Headset.”

I did not enter my passkey.

Your phone did not locate the headset.

Repeat the pairing process on page 5.

Incorrect menu selections were made on your mobile phone. Repeat the pairing process on page 5.

Callers cannot hear me, or I cannot hear caller/dialing tone.

The headset is not turned on. Press the call control button for 2 seconds until you hear a beep or see the indicator light glow blue to turn headset on.

Your headset is out of range. Move the headset closer to the phone or Bluetooth device.

Your headset battery is drained. Charge your battery using the AC power adapter supplied.

The listening volume is too low. Press the volume key up (toward the ear loop) to increase the sound heard in the headset.

Product Specifications

Talk Time*	Up to 7 hours
Standby Time*	Approximately 8 days or 200 hours
Charge Time	2 hours
Range	Up to Bluetooth standard 33 feet (10 meters)
Power Requirements	5V DC – 350 mA
Battery Type	Lithium ion polymer
Storage/Usage Temperature	32F – 120F (0C – 48C)
Version	Bluetooth 2.0
Supports Bluetooth hands-free and headset profiles.	

* Battery enabled. Performance may vary by device.

LIMITED WARRANTY

This warranty covers defects in materials and workmanship of products manufactured, sold or certified by Plantronics which were purchased and used in the United States.

The warranty lasts for one year from the date of purchase of the products.

This warranty extends to you only if you are the end user with the original purchase receipt.

We will at our option, repair or replace the products that do not conform to the warranty. We may use functionally equivalent reconditioned/refurbished/remanufactured/pre-owned or new products or parts.

To obtain service in the U.S., contact Plantronics at (866) 363-BLUE (2583).

THIS IS PLANTRONICS' COMPLETE WARRANTY FOR THE PRODUCTS.

This warranty gives you specific legal rights, and you may also have other rights that vary from state to state. Please contact your dealer or our service center for the full details of our limited warranty, including items not covered by this limited warranty.

REGULATORY NOTICES

EXPOSURE TO RF RADIATION

The internal wireless radio operates within the guidelines found in radio frequency safety standards and recommendations, which reflect the consensus of the scientific community. Independent studies have shown that the internal wireless radio is safe for use by consumers. Visit www.plantronics.com for more information.

NOTE: Modifications not expressly approved by Plantronics, Inc. could void the user's authority to operate the equipment.

US FCC REQUIREMENTS PART 15

This device complies with Part 15 of the FCC Rules. Operation is subject to the following two conditions:

1. This device may not cause harmful interference, and
2. This device must accept any interference received, including interference that may cause undesired operation.

This equipment has been tested and found to comply with the limits for a Class B digital device, pursuant to Part 15 of the FCC Rules. These limits are designed to provide reasonable protection against harmful interference in a residential installation. This equipment generates, uses, and can radiate radio frequency energy and, if not installed and used in accordance with the instructions, may cause harmful interference to radio communications.

However, there is no guarantee that interference will not occur in a particular installation. If this equipment does cause harmful interference to radio or television reception which can be determined by turning the radio or television off and on, the user is encouraged to try to correct interference by one or more of the following measures:

1. Reorient or relocate the receiving antenna.
2. Increase the separation between the equipment and receiver.
3. Connect the equipment into an outlet on another circuit.
4. Consult the dealer or an experienced radio/TV technician for help.

EXPOSURE TO RADIO FREQUENCY RADIATION

This device and its antenna must not be co-located or operated in conjunction with any other antenna or transmitter. To comply with FCC RF exposure requirements, only use supplied antenna. Any unauthorized modification to the antenna or device could void the user's authority to operate this device.



Plantronics, Inc.
345 Encinal
Santa Cruz, CA 95060
United States
Tel: 800-544-4660
www.plantronics.com

© 2007 Plantronics, Inc. All rights reserved. Plantronics, the logo design, Plantronics Explorer, QuickPair and Sound Innovation are trademarks or registered trademarks of Plantronics, Inc. The Bluetooth word mark and logo are owned by Bluetooth SIG, Inc. and any use of such marks by Plantronics, Inc. is under license. All other trademarks are the property of their respective owners.

U.S. Patents Pending
78564-01 (12-07)