



**PLANTRONICS**  
SOUND INNOVATION™

→ ● ● ● → USER GUIDE

# **PLANTRONICS EXPLORER™ 220**

BLUETOOTH® HEADSET



# TABLE OF CONTENTS

---


Package Contents & Features	3
Charging & Powering	3
Pairing	4
Adjusting Fit	6
Using Your Headset	7
Indicator Lights	8
Accessories	9
Troubleshooting	9
Product Specifications	10
Model & Country Information	11
Warranty	11

## WELCOME

Thank you for purchasing a Plantronics headset.

Let us provide you with the best possible service and technical support. After reviewing this user guide, if you need additional assistance or have any product questions, please contact:

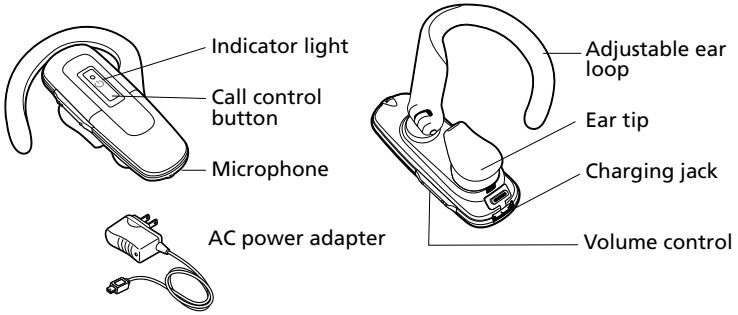
- [www.plantronics.com/support](http://www.plantronics.com/support)

 Please refer to the separate Safety Instructions booklet for important product safety information prior to installation or use of the product.

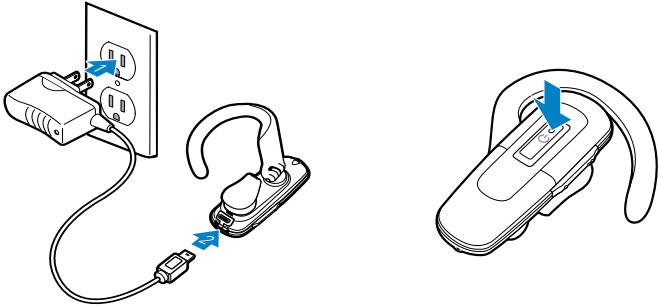
## REGISTER YOUR PRODUCT ONLINE

Visit [www.plantronics.com/productregistration](http://www.plantronics.com/productregistration) to register your product online so we can provide you with the best possible service and technical support.

# PACKAGE CONTENTS & FEATURES





## CHARGING & POWERING



### CHARGING

Before using, you must first charge your headset.

20 minutes = minimum charge 

2 hours = full charge 

Indicator light is solid red when battery is charging.

**NOTE** For the best user experience, keep your headset fully charged.

**CAUTION** Do not use headset while charging and do not connect the charger while the headset is in use.

### POWERING

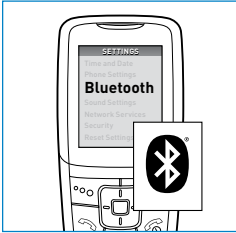
Press and hold the call control button for 2 seconds to power on.

Press and hold the call control button for 3 seconds to power off.

# PAIRING

This headset comes with QuickPair™ technology so pairing with your *Bluetooth* phone is even easier. Follow the instructions below to pair your phone with your headset for the first time.

## QUICKPAIR FEATURE INSTRUCTIONS



### Step One: Prepare Phone— Turn on *Bluetooth*

For most phones, go to *Settings/Tools* menu and select *Bluetooth* or *Connectivity* and select “On.” (Or see the user guide for your phone.)



### Step Two: Prepare Headset— Pairing Mode

Begin with headset turned off. Turn headset on (hold call control button for 2 seconds until the light flashes blue) and it will automatically go into pairing mode, flashing red and blue.

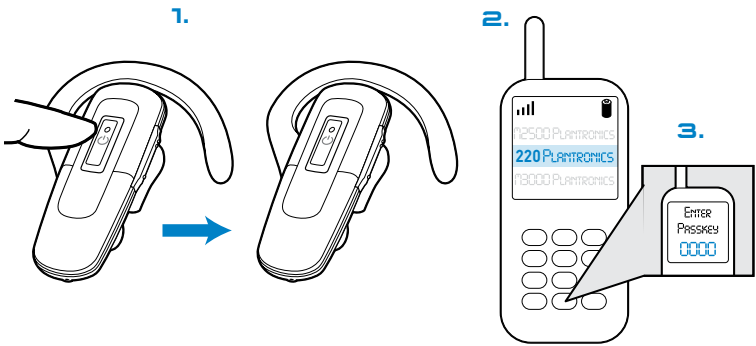


### Step Three: Pairing— Add Headset to Phone

For most phones, go to *Settings/Tools > Bluetooth > Search* or *Add a Device*, then Select “220Plantronics.” For passkey enter 0000. Headset will flash blue when paired successfully. It is now powered on and ready to use.

**NOTE:** Normally you only need to pair the headset and handset once. If headset has been previously paired with another device, follow pairing instructions on the next page.

# PAIRING



If headset has previously been paired with another device, please follow these instructions for pairing a second time. Ensure that the headset is fully charged. For instructions on set-up and pairing with other *Bluetooth* devices, please consult your *Bluetooth* device user guide.

Begin with headset turned off.

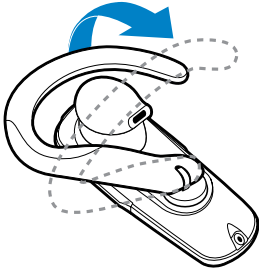
- 1.** Press and hold down the call control button for 8 seconds until the headset status indicator begins to flash blue then red. The headset is now in pairing mode for the next 120 seconds.
- 2.** While the headset is flashing, use the phone menu to search for *Bluetooth* devices and select "220Plantronics."
- 3.** When prompted for a passkey, enter 0000. Headset will flash blue when paired successfully.

**NOTE:** The headset can pair to multiple *Bluetooth* devices, but will only connect to one device at a time. The headset will automatically connect to the last device to which it was connected.

# ADJUSTING FIT

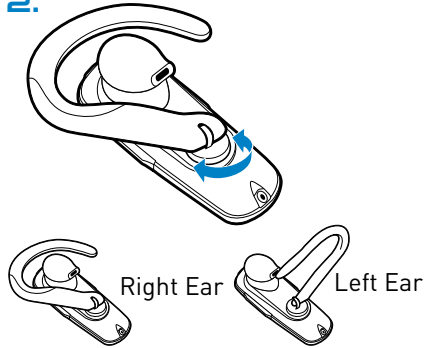
---

1.



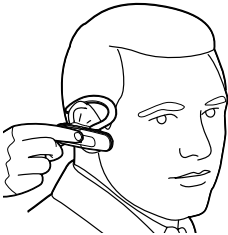
Lift ear loop.

2.



Swivel ear loop to the right or left for right or left ear wearing.

3.



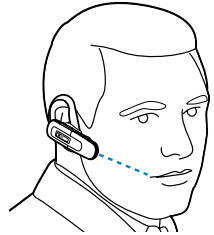
Place ear loop behind ear.

4.



Pivot headset to place speaker into ear.

5.

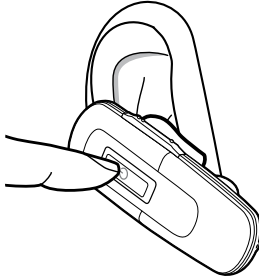


Position speaker and align microphone with mouth.

# USING YOUR HEADSET

---

## ANSWERING/ENDING/MAKING CALLS



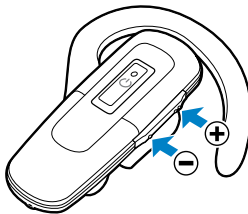
For best performance, position your mobile phone on the same side of your body as the headset.

To answer or end a call, briefly press the call control button.

To make a call, enter number on your phone, press send, and the call is automatically transferred to headset; no need to press call control button.

**NOTE:** When answering a call, wait until you hear a ring from the headset itself (not the ring from your phone), before pressing the call control button.

## ADJUSTING THE VOLUME



Briefly push up or down on the volume button for incremental volume steps. You will hear two tones (high tone followed by low tone) at the volume limit.

**⚠️ WARNING** Do not use headphones/headsets at high volumes for an extended period of time. Doing so can cause hearing loss. Always listen at moderate levels. See [www.plantronics.com/healthandsafety](http://www.plantronics.com/healthandsafety) for more information on headsets and hearing.

# USING YOUR HEADSET

---

## ADDITIONAL FEATURES

### Redialling Last Number

To activate last number redial, double press the call control button. You will hear a high tone after each key press.

### Using Voice Dialling

With the headset on, press and hold the call control button for 2 seconds to activate the voice dialling.

**NOTE** To use voice activated dialling, the voice dialling feature must be enabled on your phone. See your *Bluetooth* phone manual

for instructions.

### Rejecting a Call

When receiving an incoming call, press the call control button for 2 seconds to reject the call.

### Switching a Call From Phone to Headset

To switch an active call from your phone to your headset, press the call control button for 3 seconds.

### Switching a Call From Headset to Phone

To switch an active call from your headset to your phone, press the

## INDICATOR LIGHTS

---

Headset Status	Headset Indicator Light
----------------	-------------------------

Powering on	Blue flashes. Repeat.
-------------	-----------------------

Powering off	Red appears and goes off.
--------------	---------------------------

Charging battery	Red solid light.
------------------	------------------

Low battery	Red flashes.
-------------	--------------

Pairing mode	Blue/red flashes.
--------------	-------------------

Missed call	Purple flashes. Single press the call control button to cancel.
-------------	---

Ringing	Purple flashes. Briefly press call control button to answer the call. Press call control button for 2 seconds to reject the call.
---------	---

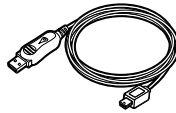


# ACCESSORIES

## AVAILABLE FOR PURCHASE



**76015-01**  
Vehicle  
charging  
adapter



**76016-01**  
USB headset  
charger

To order, please contact your Plantronics supplier or go to [www.plantronics.com](http://www.plantronics.com).

## TROUBLESHOOTING

### PROBLEM

### SOLUTION

My headset does not work with my phone.

Headset was not in pairing mode when mobile phone menu selections were made. See page 4 “*Bluetooth Pairing*”.

Incorrect menu selections were made on your mobile phone. See page 4 “*Bluetooth Pairing*”.

I did not enter my passkey.

Your phone did not locate the headset.

Repeat the pairing process on page 4.

Incorrect menu selections were made on your mobile phone. Repeat the pairing process on page 4.

Callers cannot hear me, or I cannot hear caller/dialling tone.

The headset is not turned on. Press the call control button for 2 seconds until you hear a beep or see the indicator light glow blue to turn headset on.

Your headset is out of range. Move the headset closer to the phone or *Bluetooth* device.

Your headset battery is drained. Charge your battery using the AC power adapter supplied.

The listening volume is too low. Press the volume key up (toward the ear loop) to increase the sound heard in the headset.

# PRODUCT SPECIFICATIONS

---

Talk Time*	Up to 6 hours
Standby Time*	Approximately 200 hours
Charge Time	2 hours
Range	<i>Bluetooth</i> standard 33 feet (10 meters)
Power Requirements	5V DC – 300 mA
Battery Type	Lithium Ion Polymer
Version	<i>Bluetooth 2.0</i>
Storage and Usage Temperature	50F–104F (10C – 40C)

Supports *Bluetooth* hands-free and headset profiles.

\*Performance may vary by device. Headset can last up to four days without charging, based on average talk time of 1.5 hours per day.

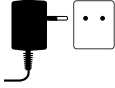


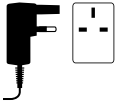
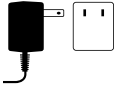
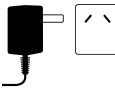
# TECHNICAL ASSISTANCE

---

Visit our Web site at [www.plantronics.com/support](http://www.plantronics.com/support) for technical support including frequently asked questions, compatibility and accessibility information.

# MODEL & COUNTRY INFORMATION

See package for product model number and refer to the table below for approved use.

	<input checked="" type="checkbox"/> AUT, BEL, DEU, DNK, ESP, FRA, GRC, ITA, IRL, LUX, NLD, PRT, SWE, FIN, CYP, CZE, EST, HUN, LVA, LTU, MLT, POL, SVK, SVN.	 
	<input checked="" type="checkbox"/> GBR	
	<input checked="" type="checkbox"/> United States, Canada	
	<input checked="" type="checkbox"/> Australia, New Zealand	

## WARRANTY

For warranty information, please refer to the included product warranty card or visit [www.plantronics.com/warranty](http://www.plantronics.com/warranty).



# **PLANTRONICS.**

SOUND INNOVATION™

Plantronics Inc  
345 Encinal Street  
Santa Cruz, CA 95060 USA  
Tel: (800) 544-4660

Plantronics Ltd  
Wootton Bassett, UK  
Tel: 0800 410014  
+44 (0)1793 842200

Plantronics Pty Ltd.  
5 Everage Street  
Victoria, 3039 Australia  
Tel: 61.3.8371.0050  
Fax: 61.3.9326.1620

[www.plantronics.com](http://www.plantronics.com)

© 2006 Plantronics, Inc. All rights reserved. Plantronics, the logo design, Plantronics Explorer, QuickPair and Sound Innovation are trademarks or registered trademarks of Plantronics, Inc. The *Bluetooth* word mark and logo are owned by Bluetooth SIG, Inc. and any use of such marks by Plantronics, Inc. is under license. All other trademarks are the property of their respective owners.  
Patents U.S. 5,210,791 and Patents Pending

72357-10 (12-06)

