

**plantronics®**

**LEARN  
MORE**

**M25™ & M55™  
Bluetooth® Headset**

# TAKE A GOOD LOOK

## A CALL BUTTON

- Take/End a call

### M25:

Take a call or end it (1 tap)

Reject a call (1-second press)

### M55:

Take a call (1 tap or say "Answer")

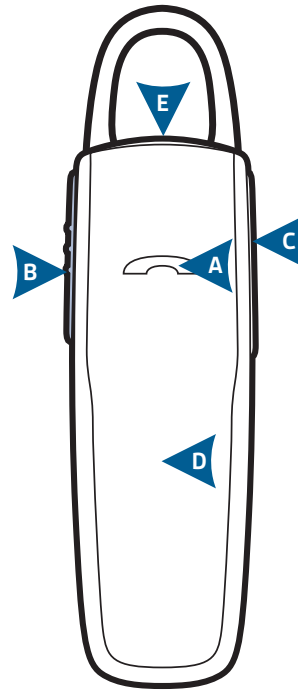
Reject a call (1-second press or say "Ignore")

End a call (1 tap)

- Redial (2 taps)
- Initiate phone's voice-dialing (2-second press until tone is heard)
- Reconnect lost Bluetooth® connection (1 tap if the headset doesn't automatically reconnect)
- Activate pairing mode after initial set up (press until LED flashes red/white)
- Exit DeepSleep™ mode (1 tap)

## B POWER SWITCH

- On (slide back to reveal green)
- Off (slide forward to cover green)



Your headset may look slightly different than the illustration, but will still work as described.

## C VOLUME BUTTON

- Volume presets (1 tap per level change)

## D INDICATOR LIGHT (LED)

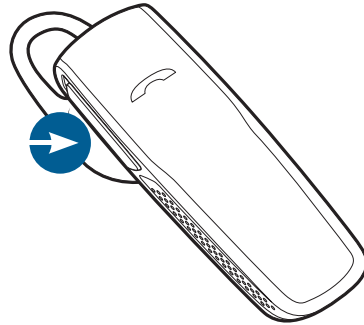
- Charging (solid red until charged)
- Very low battery (3 red flashes at powering on)
- Pairing mode (repeating red/white flashes)

## E MICRO USB CHARGING PORT

- Use with an AC wall charger:
  - 1 hour before first use
  - 2 hours (full charge)
- Do not use headset while charging

Be safe! Please read the safety guide for important safety, charging, battery and regulatory information before using your new headset.

# CONNECT TO YOUR PHONE



**"Pairing"** is the set-up process of introducing your headset to your phone. Before using your headset for the first time, you must pair it with your Bluetooth-enabled phone.

**"Multipoint"** lets you pair this headset with two phones so you can answer a call from either phone.

## 1. READY

### First time, right out of the box:

Slide the power switch to turn the headset on. The LED flashes red/white to indicate pairing mode.

### Pair new or second phone:

Turn on headset. Press Call button until the LED flashes red/white for pairing mode.



## 2. SET

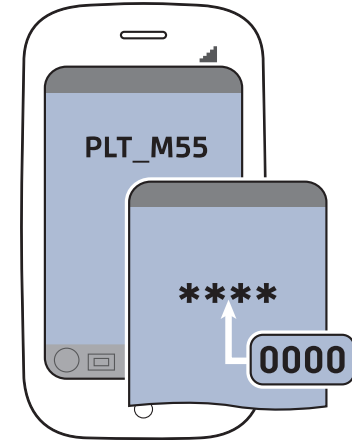
Activate the Bluetooth feature on your phone, then use phone menus to "add," "search" or "scan" new Bluetooth devices.

### Phones have different menus to select from, for example:

**iPhone:** Settings > General > Bluetooth > On (starts the search for devices)

**BlackBerry® smartphone:** Settings/options > Bluetooth: On > Search for devices

**Android™:** Settings > Wireless & Networks > Bluetooth: On > Scan for devices.



## 3. CONNECT

Select "PLT\_M25-M29" or "PLT\_M55" from the list of Bluetooth devices shown on your phone.

If phone asks for a passcode, enter four zeros (0000). You may see \*\*\*\* on screen.

Some phones also ask to confirm headset connection after pairing.

Headset LED will stop flashing red/white once successfully paired/connected.

You can now make a call using your phone's keypad or voice-dialing feature.

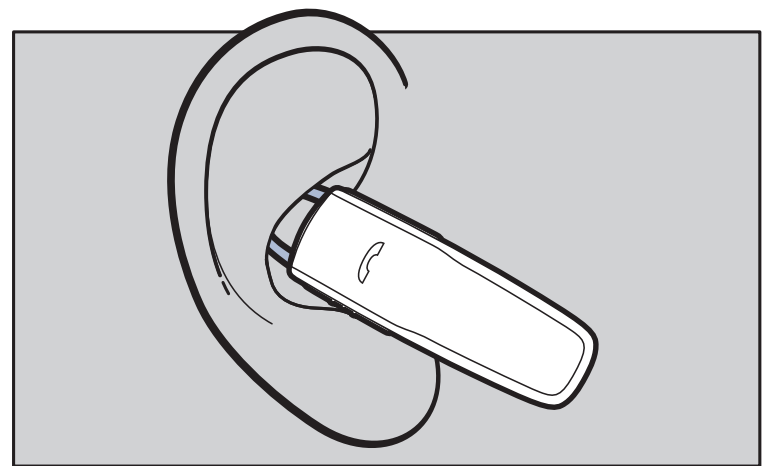
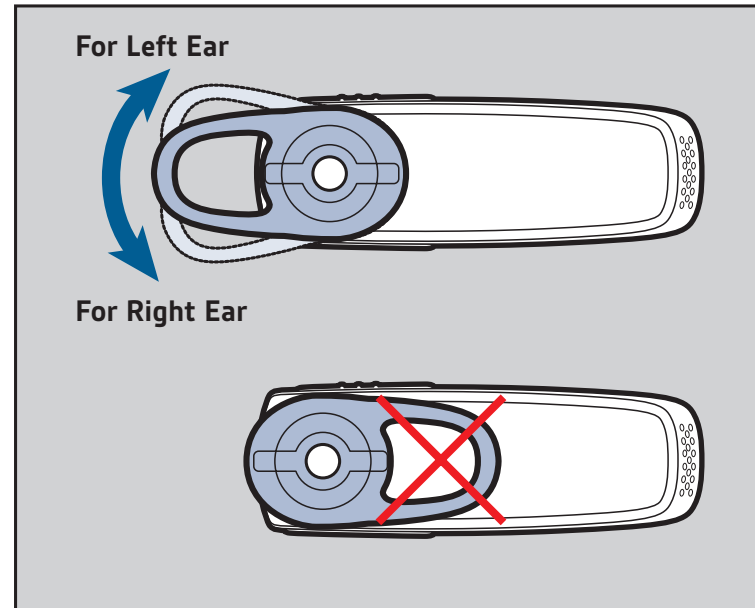
# TRY IT ON

The loop of the gel eartip tucks into the back curve of your ear for a stable fit.

Try on the headset. The eartip is positioned to suit most people, but you may want to rotate it to best fit your left or right ear.

The gel eartip clicks into grooves on the speaker, so that the eartip doesn't move out of place during use.

For best voice pickup, always check that the headset points towards the corner of your mouth.



# TIPS

## **Stay near your phone**

Bluetooth has a working “range” of up to 10 meters (33 feet) between the phone and headset before audio degrades and the connection is lost.

## **Try DeepSleep™**

If you leave your headset powered on but out of range from your paired phone for more than 90 minutes, your headset will conserve its battery power by entering into DeepSleep mode.

This power-saving mode keeps your headset charged for up to 5 months so it’s ready when you need it.

Once back in range with your phone, tap the Call button to exit DeepSleep mode. If your phone is also ringing, tap the Call button again to answer your call.

## **Know how to reconnect**

Your headset tries to reconnect a lost connection. If it can’t, then tap the Call button once or manually reconnect via the phone’s Bluetooth device menu.

If your headset remains out of range for more than 90 minutes, the DeepSleep mode will activate.

## **Turn off voice commands (M55 only)**

When prompted by the headset, you can just say “answer” or “ignore” to incoming calls – no need to press any buttons.

If you prefer not to use the voice command feature, you can disable it and just use the Call button.

To disable: with the headset powered on, simultaneously press the Call button and Volume button until you see the white LED flash twice.

To reactivate the feature: just repeat the steps and you will again see the white LED flash twice.

\*Voice commands are only available in English.

## **Use an iPhone to check headset battery**

An icon representing the battery level of your headset is automatically displayed on-screen beside the phone’s battery level icon.

## **Listen to music and more**

If your phone also has the Bluetooth “A2DP” stereo music feature, then your music, podcasts, favorite internet radio and other streaming audio can be heard through this headset.

# TIPS

## **Use Multipoint one call at a time**

With multipoint and two phones paired, it's easy to answer calls from either phone.

When already on a call, you will hear a ringtone notification of the incoming call from the second paired phone.

To answer a second call from the other phone, you must end the current call (tap Call button) so new call automatically answers.

If you choose not to answer the second call, it will go to voicemail.

## **Listen to the voice alerts (English only)**

This headset automatically announces various status alerts:

- Power On or Off
- Talk-time remaining (in hours)
- Battery Low
- Recharge Headset
- Phone 1 connected
- Phone 2 connected
- Lost connection
- No phone is connected
- Pairing
- Pairing successful
- Pairing incomplete, restart headset
- Volume Maximum
- Redial
- Answer or ignore? (M55 only)

# SPECIFICATIONS

<b>Talk time</b>	Up to 11 hours
<b>Standby time</b>	Up to 16 days
<b>DeepSleep Mode</b>	Up to 150 days
<b>Operating distance (range)</b>	Up to 10 meters (33 feet), Class II
<b>Headset weight</b>	8 grams
<b>Charge connector</b>	Micro USB charging
<b>Battery type</b>	Rechargeable non-replaceable lithium ion polymer
<b>Charge time (maximum)</b>	2 hours for full
<b>Power requirements</b>	5V DC – 180mA
<b>Bluetooth version</b>	Bluetooth v3.0
<b>Bluetooth profiles</b>	A2DP, Hands-Free (HFP) Profile 1.6 and Headset (HSP) Profile 1.2
<b>Operating temperature</b>	0 - 40°C (32°F - 104°F)
<b>Storage temperature</b>	0 - 40°C (32°F - 104°F)
<b>Charging temperature</b>	0 - 40°C (32°F - 104°F)

# NEED MORE HELP?

**en**

Plantronics Ltd  
Royal Wootton Bassett, UK  
Tel: 0800 410014

**ar**

منطقة الشرق الأوسط  
لمزيد من المعلومات:  
+44 (0)1793 842443\*

**cs**

Czech Republic  
+44 (0)1793 842443\*

**da**

Danmark  
Tel: 80 88 46 10

**de**

Plantronics GmbH  
Köln, Deutschland  
Kundenservice:  
Deutschland 0800 9323 400  
Österreich 0800 242 500  
Schweiz 0800 932 340

**el**

Για περισσότερες  
πληροφορίες:  
+44 (0)1793 842443\*

**es**

Plantronics Iberia, S.L.  
Madrid, España  
Tel: 902 41 51 91

**fi**

Finland  
Tel: 0800 117095

**fr**

Plantronics Sarl  
Noisy-le-Grand  
France  
Tel: 0800 945770

**ga**

Plantronics BV  
Regus House  
Harcourt Centre  
Harcourt Road  
Dublin 2, Ireland  
Service ROI: 1800 551 896

**he**

למידע נוסף, בקר באתר:  
+44 (0)1793 842443\*

**hu**

További információk:  
+44 (0)1793 842443\*

**it**

Plantronics Acoustics  
Italia Srl, Milano, Italia  
Numero Verde: 800 950934

**nl**

Plantronics B.V.  
Hoofddorp, Nederland  
NL 0800 7526876  
BE 0800 39202  
LUX 800 24870

**no**

Norge  
Tel: 80011336

**pl**

Aby uzyskać więcej informacji:  
+44 (0)1793 842443\*

**pt**

Portugal  
Tel: 0800 84 45 17

**ro**

Pentru informații  
+44 (0)1793 842443\*

**ru**

Дополнительная  
информация:  
8-800-200-79-92  
+44 (0)1793 842443\*

**sv**

Sverige  
Tel: 0200 21 46 81

**tr**

Daha fazla bilgi için:  
+44 (0)1793 842443\*

\*Support in English

[plantronics.com/support](https://plantronics.com/support)



# NEED MORE HELP?

## **Safety information:**

see the separate “For Your Safety” booklet

## **2-year limited warranty details:**

[plantronics.com/warranty](http://plantronics.com/warranty)

Plantronics B.V.

Scorpius 140

2132 LR Hoofddorp

Netherlands

[plantronics.com/support](http://plantronics.com/support)

© 2012 Plantronics, Inc. All Rights Reserved. Bluetooth is a registered trademark of Bluetooth SIG, Inc. and any use by Plantronics is under license. All other trademarks are the property of their respective owners. Patents US 5,712,453; Patents Pending. 87608-07 (04-12) EN-GB



**EEE Yönetmeliğine Uygundur**