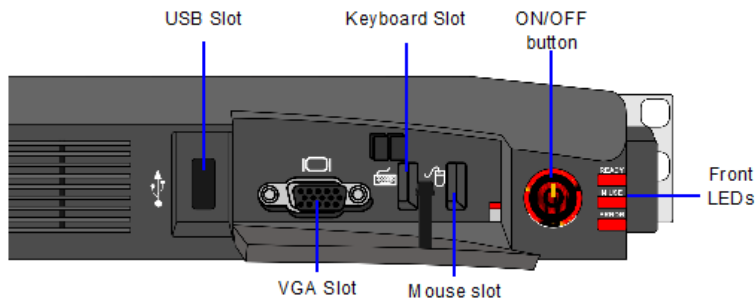


Installation Quick Start Guide for RealPresence Collaboration Server (RMX) 1500

Basic Setup



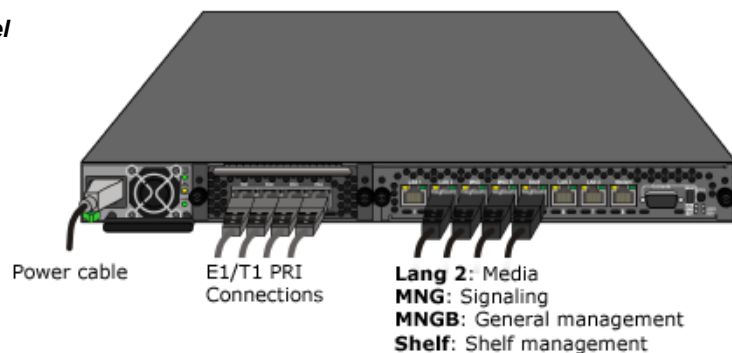
- The product name, RealPresence[®] Collaboration Server 1500 and RMX[®] 1500 are used interchangeably throughout this document.
- Before installing the RMX 1500 and performing the Basic Setup, please read the General Safety Precautions and regulatory notices described in the *RealPresence[®] Collaboration Server (RMX) 1500 Hardware Guide*.
- For a detailed description of Unpacking and Rack mounting instructions, see the *RealPresence[®] Collaboration Server (RMX) 1500 Hardware Guide*.
- If your system package includes the RTM ISDN card, it is recommended to install it before mounting the RMX on the rack. Refer to the *RealPresence[®] Collaboration Server 1500/1800/2000/4000 Getting Started Guide* for Installation instructions.



Connecting the Cables to the RealPresence Collaboration Server (RMX)

- Insert the power cable into the power connector on the rear panel of the RMX 1500.
- Connect the *Media* cable to LAN 2 port.
- Connect the network cables to the **MNG** (*Signaling*) port & **MNG B** (*Management Network*) port.
- Optional.** Connect the *Shelf Management* cable to the **Shelf** port.
- Optional.** Connect the E1/T1 cables to their **PRI** (1-4) ports.

Rear Panel



The LAN3 & LAN4 ports are not be used and the plastic caps covering those ports should not be removed.

Configuring the LAN Properties on the USB Key

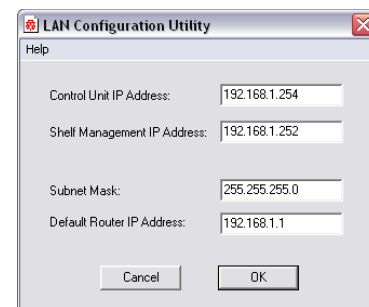
- Insert the *USB key* provided with your system into the PC workstation. The *Polycom Documentation* window opens.

In Windows 7:

- Select **Open Folder to view files using Windows Explorer**.
- Double-click the **index.hta** file.

The *Language Menu* opens.

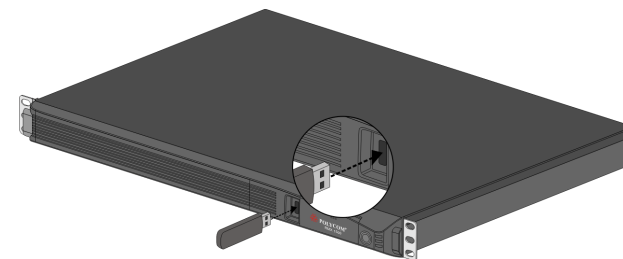
- Select the documentation language.
- In the *License Agreement* window, click the **Accept Agreement** button.
- In the *Product Type* screen, select your product model.
- In the *Initial Setup Utility*, click the **LAN Configuration Utility** hyperlink.
- The *LanConfigUtility* dialog box opens.



- Modify the parameters in the utility's dialog box using the information supplied by your network administrator.
- Click **OK**.
- Remove the USB key from the PC.

First-time Power-up and Connection to MCU

- Insert the *USB key* containing the modified IP addresses into the USB port on the RMX's back panel.



- Power the RMX **ON**. The ON/OFF button is lit (ON).

System power-up sequence may take approximately 10 minutes.

Wait for the upload process to complete. It is completed when all the flickering and flashing LEDs turn off and only the red ERROR LED remains ON. It remains ON until the *Default IP Network Service* is configured.

In the browser, enter the IP address of the RMX Control Unit and press Enter.



3

- After the *Welcome* screen is displayed, remove the *USB key* from the RMX.



Enter POLYCOM.
Enter POLYCOM.

Click **Login**.

5



Click the **Accept Agreement** check box.

Click to connect to Polycom web site and register the RMX. Click **Product Registration** and follow the on screen instructions to obtain the *Product Activation Key*.


Enter or paste the *Product Activation Key* obtained.

Click **OK**.

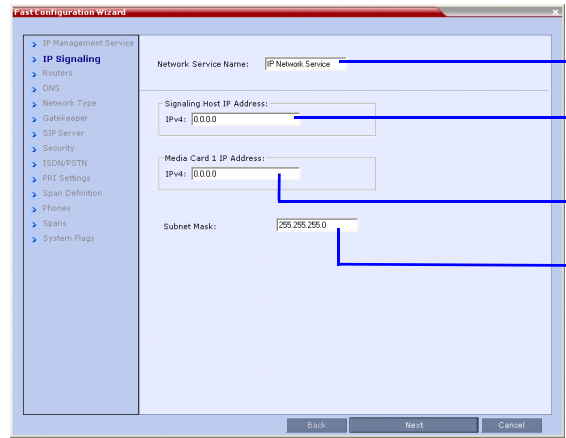
6

Initial System Configuration

This section describes the definition of H.323 Network Service, setting the RMX time, modifying the default Administrator user and setting basic system flags. For detailed description of H.323, SIP and ISDN Network Service definitions, see the *RealPresence Collaboration Server (RMX) 1500/1800/2000/4000 Getting Started Guide, "First Time Installation and Configuration"*.

 IPv4 is the default protocol for setting the Network Service in the *Fast Configuration Wizard*.

>> In the *Fast Configuration Wizard*, select **Next** to move from one window to another.



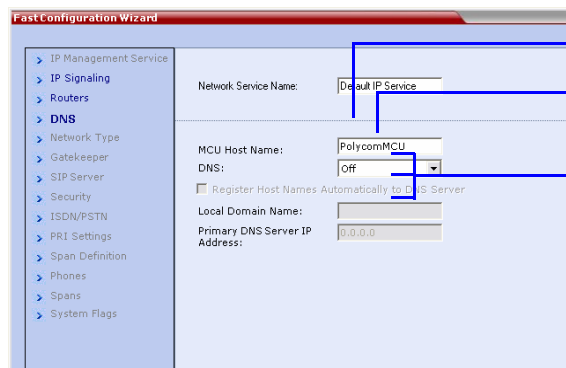
Change the default service name if required.

Enter the address to be used by IP endpoints when dialing in to the MCU.

Enter the IP address of the media card.

Enter the subnet mask of the MCU.

- 1
- 2 In the *Routers* tab, in the **Default Router IP address IPv4** field, enter the IP address of the default router and click **Next**.



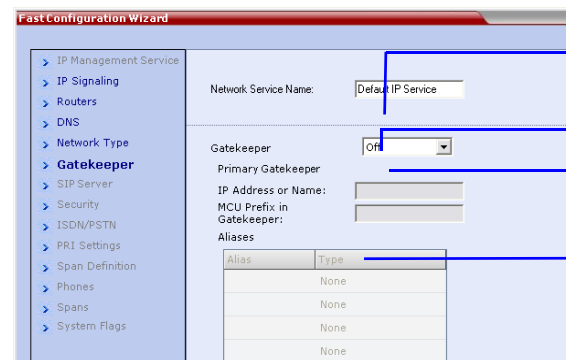
Enter the name of the MCU on the network.

Optional. Select **Specify** to define a DNS server.

Optional. Define the DNS server properties:

- Registration mode
- The name of the MCU domain
- The static IP address of the primary DNS server

- 3
- 4 In the *Network Type* tab, **IP Network Type** field, select **H.323** and click **Next**.



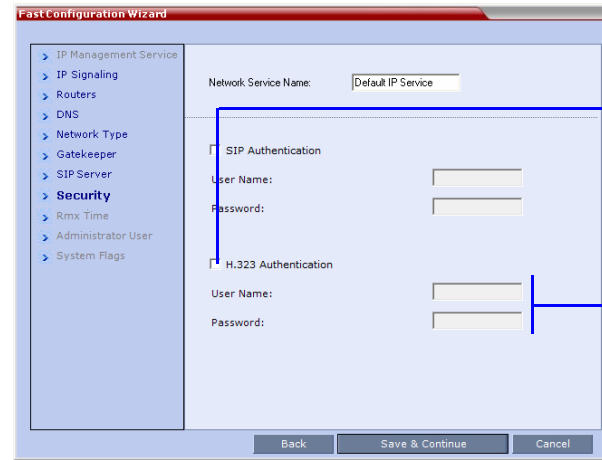
Select **Specify** to configure the gatekeeper parameters.

Enter gatekeeper's host name or IP address.

Enter the string with which the MCU registers itself with the gatekeeper.

Enter the alias that identifies the RMX's Signaling Host within the network. Up to five aliases can be defined for each RMX.

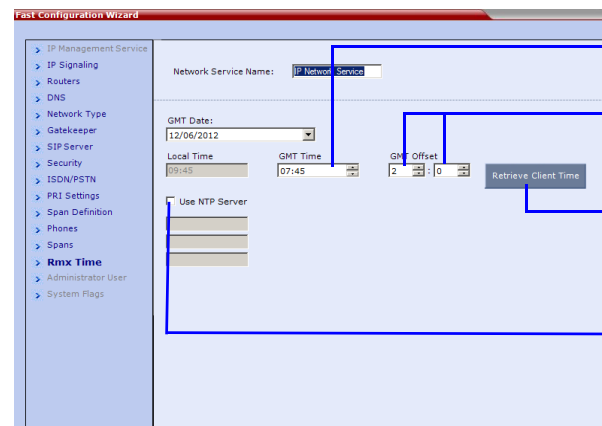
5



Select this check box only if the authentication is enabled on the gatekeeper, to enable the Collaboration Server to register with the gatekeeper. Otherwise, skip this tab.

Enter the user name and password the Collaboration Server will use to authenticate itself with the gatekeeper. The name and password must be defined in the gatekeeper.

- 6
- 7 Click the **Save & Continue** button.
- 8 In the *IP Network Service creation confirmation* window, click **OK**.

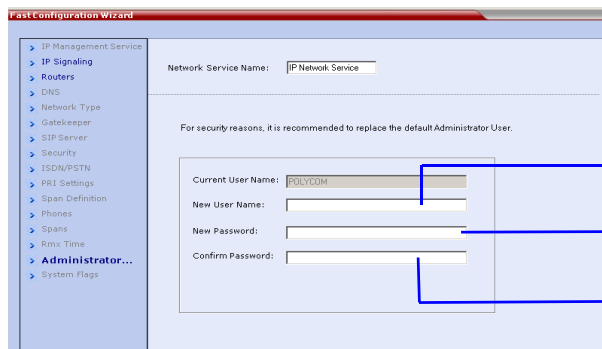


Option 1: Using the arrows, set the *GMT Time* on the RMX. Using the arrows, set the time zone difference between Greenwich and the RMX's physical location.

Option 2: Click to automatically update the RMX's *GMT Date, Time* and *Offset* to match that of the workstation.

Option 3: Select this check box to synchronize RMX time with up to three external *NTP* servers and enter their IP addresses.

9

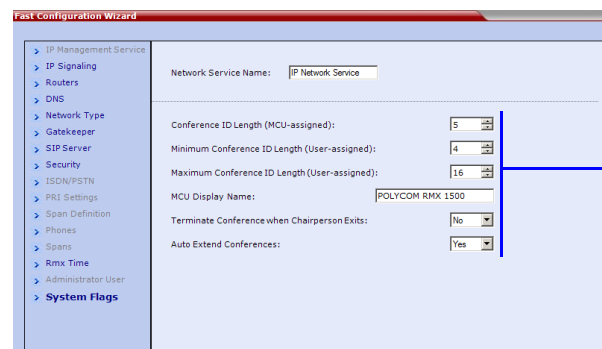


Enter the new user name of the new administrator user.

Enter the password for the new administrator user.

Enter the new password again to confirm the new password.

10



Optional. Modify the default settings of the system flags that define the general system behavior such as the number of digits in the conference ID assigned by the MCU.

These flags can be modified later, if required, by clicking **Setup** menu > **System Configuration**.

11

- 12 Click **Save & Close**.
- 13 In the *Success Message* box confirming successful configuration, click **OK**.
- 14 In the *Reset Confirmation* dialog box, click **Yes**.
- 15 In the *Please wait for system reset* message box, click **OK**. **System restart may take up to 10 minutes.**
- 16 Refresh the browser periodically until the Login screen is displayed and *Login*. In the *Main Screen* an *MCU State* indicator displays the time remaining until the system start-up is complete.

When the default RMX User is replaced and the *RMX Time* is set and if there are no *System Errors*, the green **READY** LED on the RMX's front panel turns ON and the red **ERROR** LED turns OFF.

Connecting to a Conference Directly or via Entry Queue

The *RealPresence Collaboration Server (RMX)* is shipped with pre-configured default CP (AVC) conferencing entities that can be used to dial in and start conferences. Default (Transit) Entry Queue ID: 1000, default Meeting Room IDs: 1001, 1002, 1003, and 1004.

H.323 Participants

Dial: [MCU Prefix in Gatekeeper] [Conference or Entry Queue ID/Name]
For example, if the MCU prefix in the gatekeeper is 925, enter 925 or 9251000 to connect to the EQ or 9251001/2/3/4 to connect directly to the conference. When connected to the EQ, enter the destination Meeting Room ID (i.e. 1001, 1002, 1003 or 1004). Alternatively, use the EQ or conference name. For example, if the conference name is Maple_Room, the participant can dial: 925Maple_Room.

SIP Participants

Dial: **conference_routing_name@domain_name**. Conference routing name must be registered with the SIP server. For example, enter 1001@polycom.com if conference routing name is 1001 and the domain name is polycom.com.

ISDN and PSTN Participants

Dial one of the numbers assigned to the conference, Meeting Room or Entry Queue with the required country and area code. When connected to an EQ you are routed to the conference according to the destination conference ID you enter. For example, if the assigned dial in number is 4045555, they dial this number with the appropriate area code (for example, 678) and country code (001).

Conference Control Using DTMF Codes

Operation	DTMF String	Operation	DTMF String
Start Click&View to modify personal layout	**	Play Help Menu	*83
Mute My Line	*6	Request private assistance	*0
Unmute My Line	#6	Request assistance for conference	00
Increase Broadcast Volume	*9	Increase Listening Volume	*76
Decrease Broadcast Volume	#9	Decrease Listening Volume	#76
Invite Participant	*72	Change To Chairperson	*78
Disconnect last invited participant	#72	Show Number of Participants	*88