


# POLY UNIVERSITY

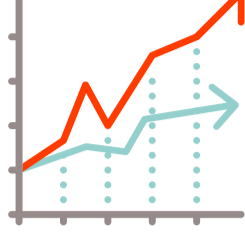

COLLABORATION TECHNOLOGY KEEPS EVOLVING.  
YOUR SKILLSET SHOULD, TOO!



Trying to **improve user experiences** and drive **better adoption rates**?

Could your team use **additional support** with solving complex, technical problems?

Want a leg up on the **latest technology**?

## \$37B

is lost yearly due to employee misunderstandings and bad communication

- Holmes Report

## 89%

of employees and executives cite lack of collaboration or ineffective communication for workplace process failure

- ClearCompany

## 94%

of businesses that use video conferencing say it increases productivity

- Wainhouse Research

## 5 REASONS to invest in technical training

- 1 Deploy faster and speed up adoption
- 2 Experience effortless operation
- 3 Save time and money
- 4 Realize your professional development goals
- 5 Increase ROI

## ACHIEVE YOUR GOALS WITH POLY UNIVERSITY



### Learning that fits your life

Our highly experienced instructors offer progressive learning paths in the formats that best fit your budget, schedule, and personal learning preferences.

You can attend at a Poly training site, your location, or online.



**Free** online, self-paced learning



**Instructor-led** classroom and live virtual learning



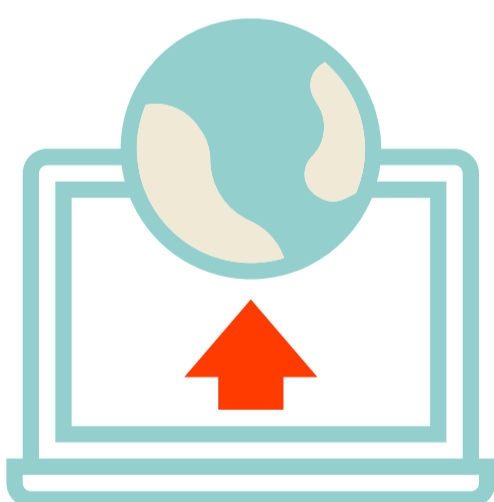
Virtual **remote labs**



**Customized** courses available

## WHO SHOULD ATTEND?

- ✓ IT MANAGERS
- ✓ TECHNOLOGY CONSULTANTS
- ✓ SYSTEM ADMINISTRATORS



## GO STRAIGHT TO THE SOURCE

Poly is committed to supporting you and your team in learning how to better leverage collaboration solutions in your organization.

### 20+

training centers globally

### 200+

courses

### 100K+

learning sessions annually

### CONTENT

covers high-level overviews to in-depth technical training

## GET CERTIFIED

### INTERESTED IN BECOMING CERTIFIED BY POLY?

The Poly expert provides technical training and certification for personnel interested in the operation, support, and installation of Poly solutions.



Sales, pre-sales, and system engineers



Field support engineers



Help desk personnel



Field/implementation engineers

START LEARNING TODAY WITH POLY UNIVERSITY

START NOW

[www.poly.com/training](http://www.poly.com/training)